

# access

the Collaborative's Transportation Group

## ADA: Planning, Design and Compliance Assessment

### the COLLABORATIVE

- the Collaborative has conducted Americans with Disabilities Act compliance assessments at more than **470 transit stations** for over **30 transit agencies** across the nation
- the Collaborative has carried out on-site ADA compliance assessments of **bus operations** for more than **70 transit agencies** across the entire United States, from Boston to Guam
- the Collaborative is expert in **Parts 37 and 38** of the ADA's regulations
- the Collaborative's landscape architecture group incorporates ADA requirements into the design of parks, streetscapes, and outdoor spaces

# ADA

## Firm Overview

The Collaborative (formerly Planners Collaborative) is a Boston-based, 50-person consulting firm with offices in Massachusetts, Georgia and California. Since our incorporation in 1990, we have helped numerous clients succeed through the application of our skills in transportation, land use, permitting, and environmental issues. Contributing to these efforts is our mastery of public communications, which helps foster strong links among agencies and stakeholder communities, using graphic design, written material, brochures, audiovisual media, websites and event management.

Our Transportation Group's capabilities in transportation and community planning are typified by a creative approach to the planning and evaluation of transportation facilities, programs and services. Our practice includes community transportation planning, transit planning, management consulting and sustainable transportation. We have an active national ADA practice in the improvement of access and mobility for persons with disabilities.

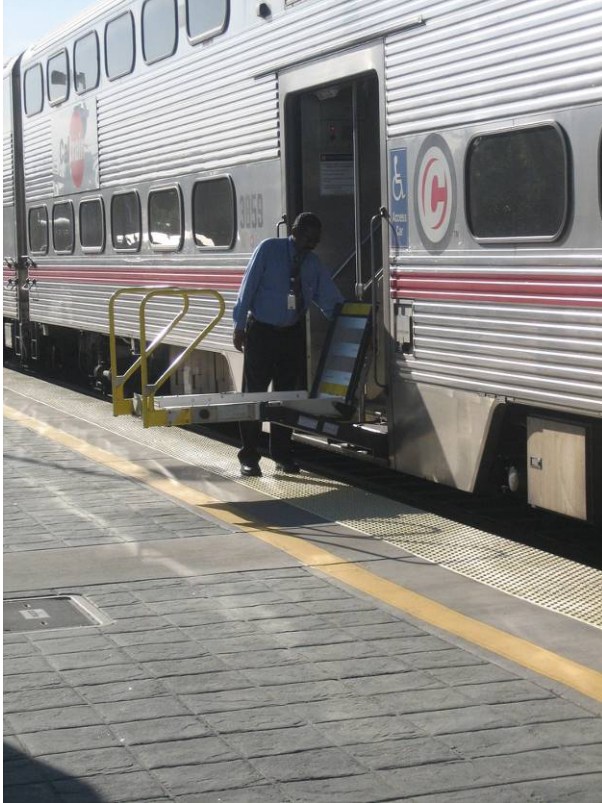
Collaborative staff have worked in or for over 100 Massachusetts communities and agencies. We have a successful record of accomplishment on projects for the Massachusetts Department of Transportation, including the former Massachusetts Executive Office of Transportation and Massachusetts Highway Department. We have also worked for the Massachusetts Bay Transportation Authority.

### Our MassDOT project experience includes:

- *youMove Massachusetts* Transportation Plan Outreach
- Route 28X Enhancements Project Outreach
- Massachusetts Bicycle Transportation Plan
- Safe Routes to School Infrastructure Program
- Transportation Enhancements (TE) Program Redesign
- Massachusetts Statewide Airport System Plan
- I-93/I-95 Interchange Study
- Massachusetts Statewide Transportation Plan
- Massachusetts Statewide Bicycle Plan

## ADA Compliance Assessments

Federal Transit Administration (FTA), Office of Civil Rights (TCR)



The Federal Transit Administration (FTA) Office of Civil Rights (TCR) is required to assess compliance with the requirements of the Americans with Disabilities Act (ADA). Since 2000, the Collaborative, on TCR's behalf, has been the prime contractor conducting over 60 on-site reviews of fixed route stop announcements, fixed route lift reliability and maintenance, and ADA complementary paratransit service. The reviews encompass background work, on-site activities, development of reports, and follow-up monitoring of the transit systems. TCR receives assistance from private contractors to conduct the reviews.

## ADA Key Stations Assessments

Federal Transit Administration (FTA), Office of Civil Rights (TCR)



The Federal Transit Administration (FTA) Office of Civil Rights (TCR) is required to assess compliance of selected new, key, and renovated rail stations with the requirements of the Americans with Disabilities Act (ADA), United States Department of Transportation ADA Regulations, and ADA Architectural Guidelines (ADAAG). The Collaborative has conducted ADA assessments for over 474 stations at more than 46 transit agencies throughout the country. In the process, the Collaborative has collected, organized, and analyzed data to produce a practical, management-oriented finished product. Compliance assessments involve measuring and documenting wheelchair ramps, elevators, and accessible routes, then analyzing the findings.

## ADA Commuter Rail Access Federal Transit Administration (FTA)



The Collaborative developed a guidance document for the Federal Transit Administration (FTA) to assist passenger railroad operators in identifying design solutions for access to commuter rail passenger coaches by wheelchair users. The guidance focused on providing level boarding from station platform to passenger car in settings where there is a shared-use track with freight trains. With wide (over-dimension) freight cars requiring clearance and narrower commuter cars operating on the same tracks, the gap between a commuter car and the platform can be substantial. The purpose of this guidance was to identify ways of providing level passenger boarding for all cars on a commuter train.

# Review of Suffolk County, New York ADA Paratransit Service

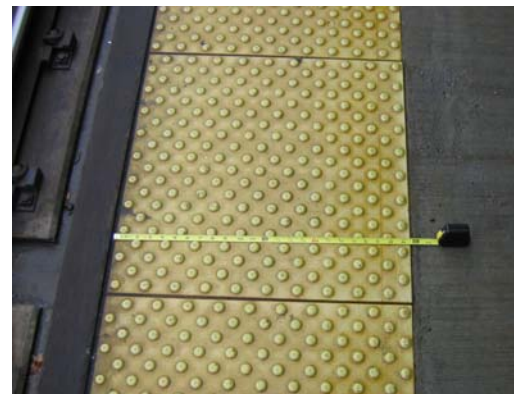
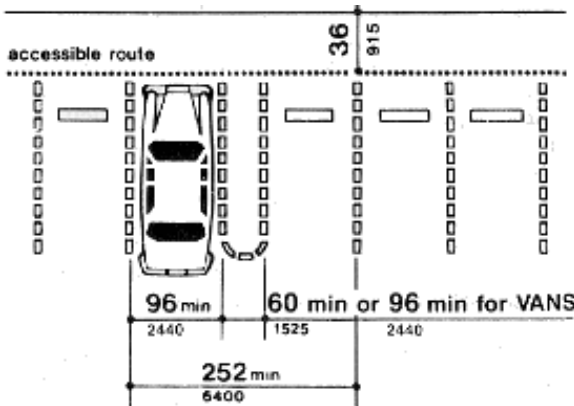
U.S. Department of Justice



For the U.S. Department of Justice (DOJ), the Collaborative conducted a desk review of accessible service provided by Suffolk County Transit (SCT) in New York, including stop and route announcements and lift operation on fixed-route bus service and ADA complementary paratransit service. The purpose of the review was to assist the DOJ in determining appropriate enforcement action to take with SCT for non-compliance with the Americans with Disabilities Act (ADA).

## Improving ADA Complementary Paratransit Demand Evaluation of MBTA Paratransit and Accessible Fixed-route Services

Massachusetts Bay Transportation Authority (MBTA)



In an effort to improve accessibility, the Massachusetts Bay Transportation Authority (MBTA) sought a consultant team to assess the current state of the MBTA's paratransit and fixed-route services and recommend immediate and long-term improvements. As part of the selected consultant team, the Collaborative led the effort on the evaluation of the MBTA's fixed-route accessibility. Key fixed-route access issues considered by the Collaborative were fleet and station accessibility, elevator and lift maintenance, repair and inspection, and stop announcements and vehicle identification.